

Model 9300



Even more value awaits horse owners with Featherlite's straight load bumper pull Model 9300. The 9300 measures 7' wide with options of a 43" or 51" dressing room. Or you can opt for our 2+1 configuration. The 51" dressing room includes a manger with walk thru door. The trailer features two 26" x 19" windows in the trailer's nose as well as a rear ramp, which is now easier to use.

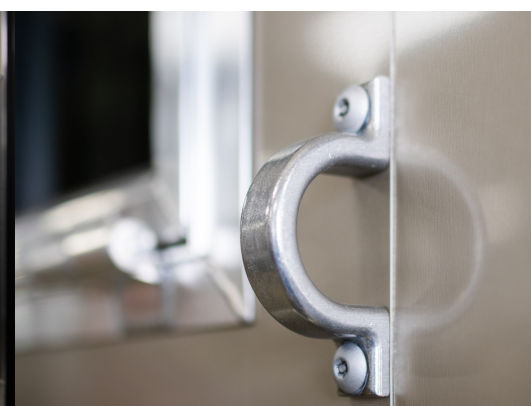
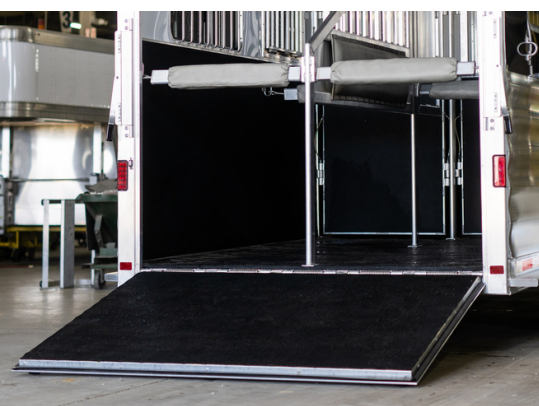


SO MANY FEATURES

ARE NOW STANDARD

TRAILER HIGHLIGHTS

- 2-horse model with 2+1 floorplan available
- Straight load
- 7' width
- 7'6" inside height
- Dressing room of 41" (2+1), 43" or 51" (manger with walk thru door)
- Rear ramp standard
- Premium Goodyear® tires and aluminum wheels standard
- 10-year limited structural & 3-year hitch-to-bumper warranty*



WHAT'S NEW?

NEW MODEL 9300	PREVIOUS MODEL	BENEFIT
All unload doors, drop down feed doors and camper doors are now square cornered.	Previous doors had rounded corners. Squared corner doors were optional.	The larger drop down feed doors allow even more light into the horse area. The square corners give a more distinctive and uniform look to the trailer.
An LED load light above the rear load door and switch are standard.	Rear LED load lights were optional.	A rear LED load light provides extra light and visibility at night during loading and unloading. This new style of light is also brighter than our previous optional offerings.
One outside tie ring per horse per side is standard.	Most floorplans included fewer tie rings.	Additional tie rings give horse owners more options for securing their horses.
Air Flo divider with shoulder separator and back leg mounted on removable post is now standard.	Horse dividers were a solid panel. Air Flo dividers were optional.	The Air Flo stall divider design with vertical bars allows for more airflow throughout the horse area, giving horses more comfort during their ride.
The 9300 features Featherlite's new rivetless aluminum side sheet design.	Trailer exterior previously featured rivets at the seams of the side sheets.	This new design gives the trailer a sleeker, smoother looking exterior. It also allows for easier graphic application.
A 56" rear ramp with double doors above and no center post is standard. Rear ramp has been redesigned to be lighter.	Select floorplans/models came with double rear doors standard.	Rear ramp has been redesigned to be lighter and easier to use.
Aluminum 'wave' side panels below the rivetless sheets are standard.	'Wave' panels were optional.	A common option previously, this new standard gives the trailer an elevated look and more durability.
Interior LED light strips are now standard.	Previous LED interior light was smaller.	The new style of interior LED light creates a brighter horse trailer interior.
Matching spare tire and rim are standard.	Spare tire and rim were optional.	This new feature gives horse trailer owners extra peace of mind for no additional cost.
Featherlite horse trailers are now built with 1 5/8" side posts.	Side posts were varying widths depending on the floorplan/model.	This provides a more uniform wall width throughout the trailer.
Aluminum halter hooks are standard.	Halter hooks were plastic previously. Aluminum halter hooks were optional.	This enhancement offers more durability and value.
Model 9300 is a standard 7' wide.	Width for select floorplans/models was 6'7".	Increased width allows for more room for horses.
The Featherlite camper door features a new double pin latch mechanism.	Single latch was found on the camper door previously.	This double pin latch more securely closes the camper door.

For more details, visit www.fthr.com.



*10-year limited structural warranty on frame and superstructure. 3-year limited warranty on all other parts manufactured and installed by Featherlite. Some exclusions apply. Ask dealer for details. **Trailer may be shown with options and specifications subject to change.